

GLOBAL LANDSCAPE DESIGNERS



Portfolio of Excellence

Some of Top Landscape Designers of The World

Contact Us

Global Presence, Local Expertise

Head Quarter - Oman

📍 Fifth Floor, Building 53, Jame Al Akbar Street, Muscat, Oman

☎ +968 91774477

Far East Office - Philippines

📍 No 3105, Jollibee Plaza, Emerald Ave, Metro Manila, Philippines

☎ +63 9061116534

South America Office - Mexico

📍 Tehuantepec #147 dapacho 7, Colonia Roma Sur, 06760, CDMX, Mexico

☎ +52 5590022053

✉ info@gl designers.com

🌐 www.gl designers.com



Our global team brings together expertise from across the world to deliver exceptional landscape design solutions.

Who We Are

A Team of Global Excellence

Global Landscape Designers is a company formed by four of the top landscape designers in the world, selected by the International Federation of Landscape Architects (IFLA) During Jinzhou Competition.

Our team offers comprehensive design & Supervision services across various areas including master planning, parks, hotels, botanical gardens, Tourist Attraction, and commercial projects.

With a long track record of success, numerous awards, and satisfied clients worldwide, our designers have completed projects in Oman, Mexico, China, Peru, UAE, and beyond.



Awards & Recognition

Some of Awards...



Jaime Cruz

- 1st Place IFLA Landscape Design Competition 2013 World garden Expo , Jinzhou
- 1st Place Greenland Green City Design Competition- Shanghai
- 1st Place nan Fang French Community Design Competition
- 1st Place Wanda Riverbank Design Competition
- Malabon City Recognition- City Environmental Assessment
- Greenland recognition- Grey Water Recycling project
- ...



Phd. Petras Gresevicius

- 3rd Place IFLA Landscape Design Competition 2013 World garden Expo- Jinzhou
- Residential District Design Competition- Vilnius
- Seskine Hills Design Competition
- Landscape Design Competition - Three Squares in Berlin
- ...



Francisco Luna

- IFLA Landscape Design Competition 2013 World garden Expo- Jinzhou
- International Open Urban & Architectural Competition for the development of Al-Riyad District Saudi Arabia.
- Great Museum of Egypt, Cairo, Egypt.
- Competition for Social Interest housing, Cambodia.
- Architectural Design Competition, WHO, Geneva, Switzerland.
- Bamiyan Cultural Center Competition, Bamiyan, Afghanistan.
- 14th International Architecture Exhibition, Venice, Italy.
- ...



Kamran Seyed Azizi

- IFLA Landscape Design Competition 2013 World garden Expo- Jinzhou
- Main Municipality Landscape Design Competition- Babylon- Iraq
- Tourist Park Landscape Design Competition- Shahrekurd- Iran
- Best Landscape Design pavilion - Exhibition centre- Dubai- UAE
- Contribution in modification of ASTM landscape standards Through ISLAP
- ...

Our Services

Comprehensive Design Excellence



Master Planning

Comprehensive planning for large-scale developments and urban areas



Parks & Leisure Facilities

Design of public parks, recreational spaces, and community facilities



Hotels & Resorts

Luxury landscape design for hospitality and recreational projects



Environmental Projects

Specialized gardens, farms, and therapeutic green spaces



Commercial Projects

Landscape solutions for shopping centers and business complexes



Urban Projects/Highways & Streetscapes

Design of road corridors, medians, and urban streetscapes



Private Villas & Offices

Custom landscape design for residential and commercial properties



Detail Development, Cost Estimation

Infrastructure coordination, cost estimation, and technical specifications



Supervision Services

Professional oversight of landscape implementation and construction

Featured Projects in the Sultanate of Oman Contributed to:

Oman Botanical Garden

Client:

Diwan of Royal Court & Ministry of Heritage and Tourism in contract with LOT

Our Role:

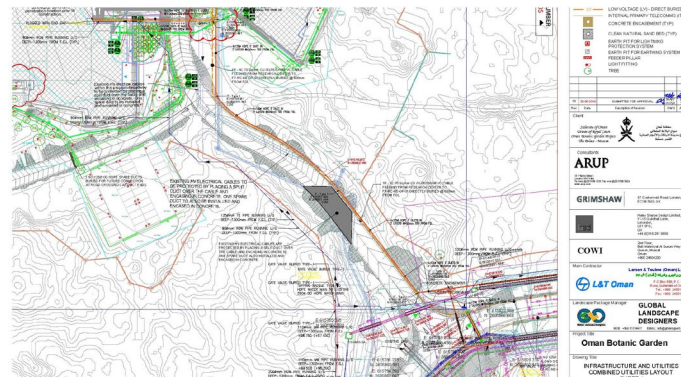
Landscape Package Manager – assisting the contractor in resolving technical issues, preparing shop drawings, raising RFIs and DQs, and providing innovative solutions.

Project Importance:

The largest national landscape initiative in Oman, with a budget exceeding **200 million OMR**. Designed to **LEED sustainability standards**, the garden focuses on the conservation and propagation of Omani native flora, establishing a world-class botanical facility that preserves ecological heritage and positions Oman as a leader in sustainable development.



Oman Botanical Garden



Featured Projects in the Sultanate of Oman Contributed to:

Yiti Sustainable City – Muscat, Oman



Client:

SDIC / Diamonds

Our Role:

Public Realm Package Supervision – overseeing the implementation of extensive landscape works, coordinating across multiple contractors, and ensuring quality and sustainability standards.

Project Importance:

Recognized as the **first sustainable city in Oman**, Yiti spans over **1.4 million sqm**. The project presented a highly complex scope, involving the integration of various packages and coordination with several major contractors, including AME, Al Tasnim, Ahdi Oman, and Gulfar. This development sets a benchmark for large-scale sustainable urban design in the Sultanate, blending advanced green infrastructure with modern community living.



Featured Projects in the Sultanate of Oman Contributed to:

Barr Al Jissah – Turtle Beach Design, Muscat, Oman

Client:

Shangri-La Hotels & Resorts

Our Role:

Design & Supervision – developing a resilient landscape design and overseeing its implementation to ensure long-term functionality and aesthetic quality.

Project Importance:

This iconic beachfront project addressed the severe damage caused by sea water storms to the resort's existing landscape. GLD introduced an innovative **wadi-inspired design solution** that safely channels seawater, protecting the site while enhancing its natural beauty. The project not only safeguarded a vital luxury hospitality destination but also demonstrated how sustainable landscape strategies can mitigate environmental risks in sensitive coastal areas.



Featured Projects in the Sultanate of Oman Contributed to:

Crowne Plaza Hotel – OCEC, Muscat, Oman



Client:
OMRAN

Our Role:

Detailed Design & Supervision – delivering comprehensive landscape design with precise detailing, while overseeing implementation and providing value engineering solutions.

Project Importance:

Part of the prestigious **Oman Convention & Exhibition Centre (OCEC)** development, this project required adherence to **high professional standards** to meet the expectations of a highly experienced client. GLD's role ensured that the landscape not only complemented the hotel's architecture but also achieved cost efficiencies through value engineering, establishing the project as a benchmark in quality hospitality landscapes in Oman.



Featured Projects in the Sultanate of Oman Contributed to:

Marriott Hotel – OCEC, Muscat, Oman



Client:

OMRAN

Our Role:

Detailed Design & Supervision – providing complete landscape design solutions with a focus on precision detailing, project supervision, and value engineering support.

Project Importance:

As part of the **Oman Convention & Exhibition Centre (OCEC)** master development, the Marriott Hotel required **luxury landscape standards** aligned with the brand's global reputation. GLD ensured seamless integration of the hotel's exterior spaces with the wider OCEC precinct, meeting stringent professional requirements and delivering sustainable, high-quality design that enhances the overall guest experience.



Featured Projects in the Sultanate of Oman Contributed to:

Kempinski Hotel – Muscat, Oman

Client:

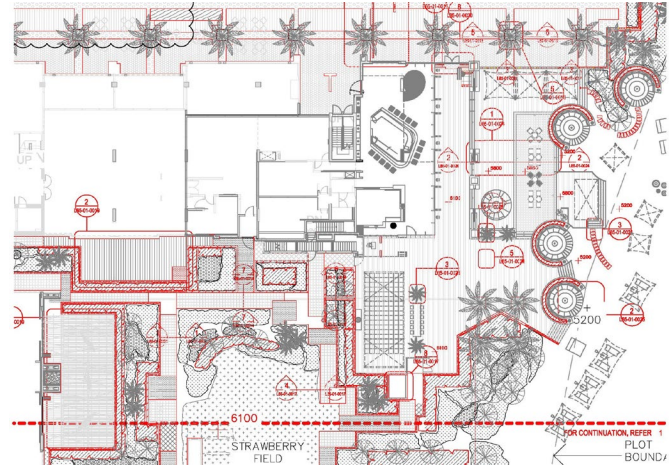
The Wave Muscat- Woods Bagot

Our Role:

Detailed Design – developing a fully coordinated landscape design package, resolving technical conflicts, and ensuring seamless integration with architecture and structure.

Project Importance:

The project posed a unique challenge as no coordinated CAD files were initially available. GLD meticulously created accurate base files, superimposed them with the final architectural and structural designs, and resolved conflicts to ensure flawless execution. The result was a high-end luxury landscape aligned with Kempinski's international hospitality standards, enhancing the resort's status as a premier destination in Muscat.



Featured Projects in the Sultanate of Oman Contributed to:

Mövenpick Hotel – Ghubrah -Muscat

Client:

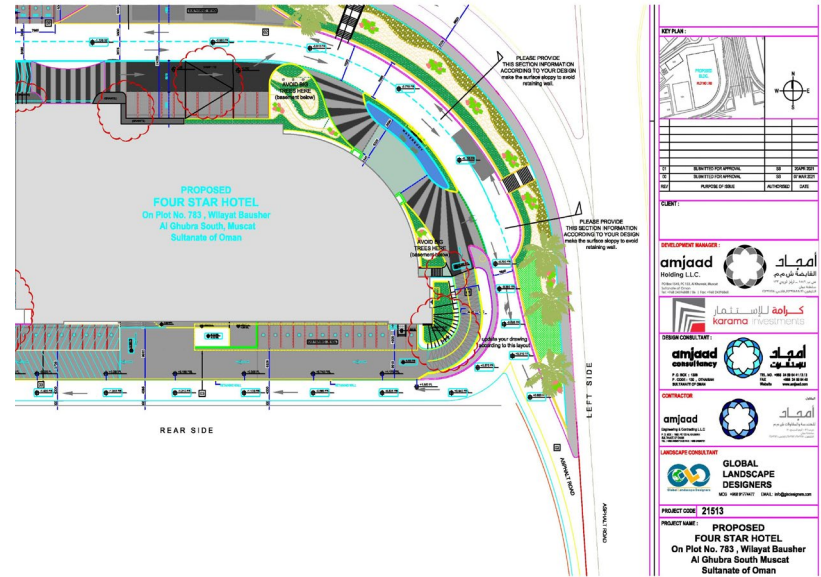
Razeen Architects & Engineers

Our Role:

Concept Design, Detailed Design & Tender Documentation – delivering a comprehensive landscape design package from concept through tender stage, ensuring clarity and precision for execution.

Project Importance:

Located in a **strategic position with road networks at varying levels**, the site presented both a challenge and an opportunity. GLD's design creatively addressed the complex topography, transforming potential constraints into distinctive landscape features that enhanced accessibility, views, and guest experience. The project reinforces Mövenpick's brand identity in Oman as a luxury hospitality landmark.



Featured Projects in the Sultanate of Oman Contributed to:

Nizwa Public Park – Nizwa, Oman

Client:

Nizwa Municipality / Arabic House

Our Role:

Concept Design, Detailed Design, Tender Documentation & Tender Evaluation – delivering the complete design package and supporting the municipality in selecting qualified contractors.

Project Importance:

As one of the major public parks in the interior region of Oman, the Nizwa Public Park plays a vital role in enhancing community life and providing much-needed recreational green space. GLD's work ensured a well-integrated design that reflects the cultural identity of Nizwa while meeting modern recreational and environmental standards, setting a precedent for future municipal park developments in the Sultanate.



Featured Projects in the Sultanate of Oman Contributed to:

Sur Public Park – Sur

Client:

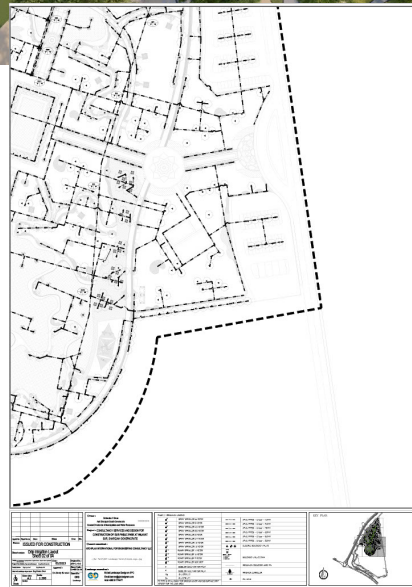
Sur Municipality / Amjaad Engineering

Our Role:

Concept Design, Detailed Design, Cost Estimation, Tender Documentation, Tender Support & Technical Evaluation – providing a full design-to-tender package with financial and technical guidance.

Project Importance:

The project initially faced a major challenge as an earlier concept prepared outside Oman was nearly **three times over the allocated budget**. GLD successfully reworked the design, optimizing layouts and materials while preserving both aesthetics and functionality. This achievement allowed the project to proceed within the municipality's budget, setting an example of cost-effective yet high-quality public park design in the Sultanate.



Featured Projects in the Sultanate of Oman Contributed to:

Italat Yanqul Park – Yanqul, Oman

Client:

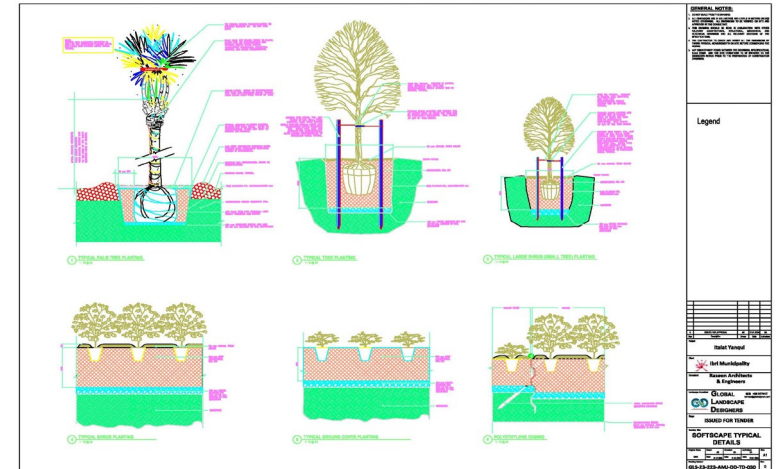
Ibri Municipality / Razeen Architects & Engineers

Our Role:

Concept Design, Detailed Design & Tender Documentation – delivering a complete design package from concept through tender stage to support successful implementation.

Project Importance:

Italat Yanqul Park was envisioned as a key community green space for the Yanqul region, enhancing the quality of life for residents and visitors. GLD's design balanced functionality with cultural and environmental sensitivity, ensuring the park provides recreational, aesthetic, and ecological value. The project strengthens the municipality's commitment to sustainable urban development in Oman's interior.



Featured Projects in the Sultanate of Oman Contributed to:

Hay Al Sharq Theme Park & Residential Project – Barka

Client:
ASAAS

Our Role:

Peer Review & Redesign – revising the concept, detailed design, irrigation design, tender documentation, and cost estimation to ensure climate suitability and resource efficiency.

Project Importance:

As one of Oman's most ambitious developments, the Hay Al Sharq project integrates a residential community with two large theme parks and a water park. The initial design proved unsuitable for Oman's climate, with **water consumption projected at nearly ten times the available supply**. GLD was entrusted to rework the entire landscape and irrigation design, respecting the original pre-concept while adapting it to sustainable local conditions. The revised design not only aligned with resource realities but also established a new benchmark for large-scale, climate-resilient urban and recreational landscapes in the Sultanate.

ALSHARAF
LANDSCAPING AND IRRIGATION WORKS
DESIGN CALCULATION FOR IRRIGATION NETWORK

IRRIGATION DISTRIBUTION SCHEDULE

PLANT TYPE	TYPE OF RESPONSE	IRRIGATION SCHEDULE	WATER REQUIREMENT (mm)
Palm	CRIP	3 m of 24 LPH nozzles / Palm	120
Tree	CRIP	3 m of 24 LPH nozzles / Tree	72
Uncovered Shrub	CRIP	3 m of 4 LPH nozzles / m ²	12
Planting area	CRIP	4 m of 4 LPH nozzles / m ²	16
Lawn	Drophead	1.5 m of 1 m ²	16

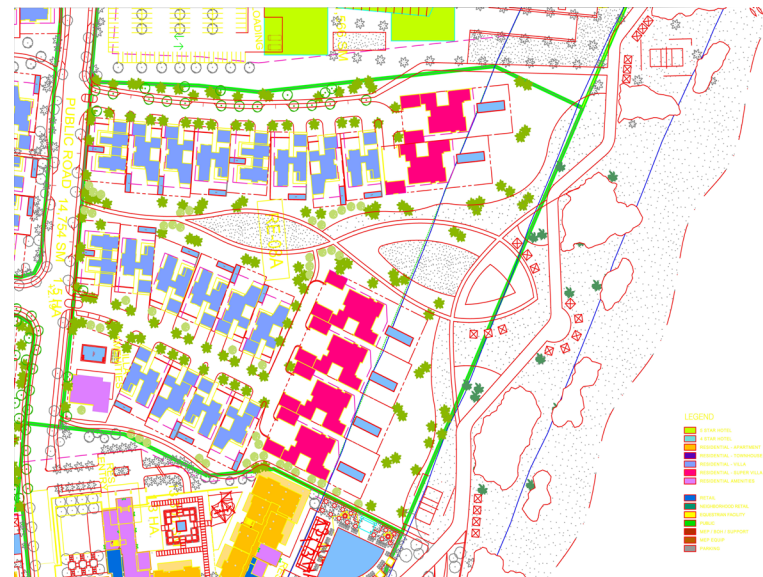
INVESTIGATION DISTRIBUTION SCHEDULE

PLANT TYPE	TYPE OF BIOLOGICALS	BIOLOGICAL SCHEDULE	WATERWAY FLOW (m ³ /s)
Fishes (24 spp.)	EMITTERS	3 or 4 of 100 GPM nozzles / Fish	0.53
Large Trees (1716 m ²)	EMITTERS	3 or 4 of 100 GPM nozzles / Tree	0.31
Individual shrubs (1820 m ²)	EMITTERS	3 or 4 of 100 GPM nozzles / shrub	0.05
Planting area (450.7 m ²)	EMITTERS	4 or 4 of 100 GPM nozzles / shrub	0.07
Leaves (101 km ²)	Speakers		2.64

BEYOND WATER REQUIREMENT / DAY				
PLANT TYPE	PLANT CITY	WATER REQUIREMENT / DAY (m³)	TOTAL WATER REQUIREMENT / DAY (m³)	UNIT
Palm	15	120	135	L
Teak	67	72	424	L
Individual Shrubs	13	13	214	L
Planting area	1420-4	16	22728-4	L
Land	0	12	6	L
Total Water Requirement Day			25041-4	G
Total Water Requirement Day			731057	G
Tank Capacity Required - 5000				

RE-GRASSING REQUIREMENT (a/f)				
FLAKE TYPE	PLANT GTY	MAXIMUM REPAIR AREA	TOTAL REPAIR REQUIREMENT (sq. ft.)	NO.
Paving	50	120	6000	1
Seal	55	72	5400	1
Individual Slabs	54	12	272	1
Planting area	6550	NA	2400	1
Leak	1500	12	1800	2
Total Water Requisition/Day			31682	1
Total Water Requisition/Day			3622	67
Tank Capacity Required - 76.6 m ³				

60,000 WATER REQUIREMENT Q&P				
PLANT TYPE	PLANT QTY	WATER REQUIREMENT (GPM)	TOTAL WATER REQUIREMENT (GPM)	UNIT
Palm	21	500	10,500	
Trees	38	72	2,736	
Individual Shrubs	60	32	1,920	
Planting area	300.2		14,000.2	
Losses	61	52	3,172	
Total Water Requirement			28,328.2	gpm
Total Water Requirement			4,000.00	gpm
Tank Capacity Required			41,000	gpm



Featured Projects in the Sultanate of Oman Contributed to:

Ras Al Hamra Development – Muscat, Oman

Client:

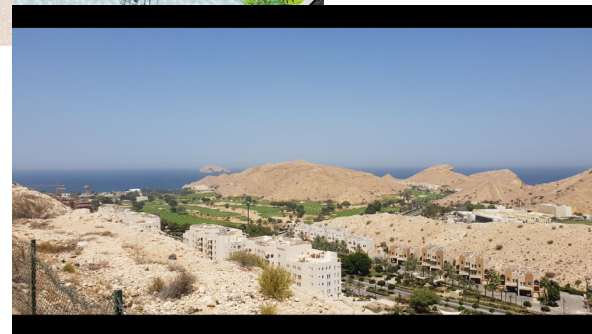
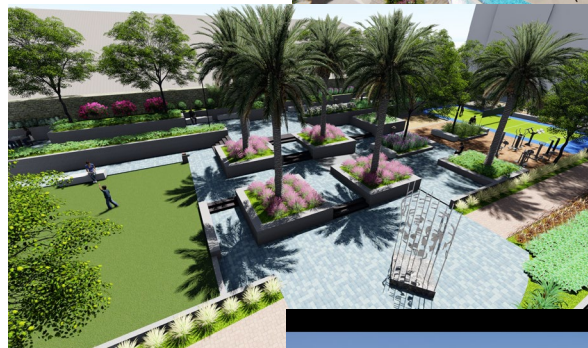
Petroleum Development Oman (PDO) / NJP Oman

Our Role:

Concept Design, Detailed Design & Tender Documentation – delivering a complete and coordinated landscape design package for the development's public realm.

Project Importance:

As part of PDO's flagship community development in Muscat, the Ras Al Hamra project required landscapes that met the **highest international standards for public realm design**. GLD's contribution ensured that outdoor spaces were functional, aesthetically refined, and fully integrated with the masterplan, providing a model for sustainable and high-quality residential and community development in Oman.



Featured Projects in the Sultanate of Oman Contributed to:

Hilton Garden Inn – Al Khuwair, Muscat, Oman

Client:



ASAAS

Our Role:

Schematic Design, Detailed Design, Tender Documentation & Supervision – delivering a full landscape design package from early stages through to execution oversight.

Project Importance:

Located in one of Muscat's most **densely populated urban districts**, the Hilton Garden Inn plays a key role in enhancing the area's hospitality and social infrastructure. GLD's contribution ensured a well-coordinated and functional landscape design that balanced brand standards with the needs of the surrounding community. The project highlights how thoughtful landscape design can serve both a private hospitality development and the wider urban society.



Featured Projects in the Sultanate of Oman Contributed to:

Waterfront Improvement Projects – Lakbi, Ras Souqrah, Ras Madrasah & Shannah, Al Wusta

Client:

Al Wusta Governor Office

Our Role:

Concept Design, Detailed Design, Tender Documentation, Technical Evaluation & Cost Estimation – providing a complete design and procurement support package for multiple coastal developments.

Project Importance:

Situated along some of Oman's **most beautiful year-round beaches**, these projects were conceived to enhance public realm quality, encourage local businesses, and attract private investments. GLD's designs integrated coastal resilience with recreational value, creating sustainable and inviting waterfront destinations that support tourism growth and regional economic development while showcasing the natural beauty of Al Wusta.



Featured Projects in the Sultanate of Oman Contributed to:

Musandam Cultural Centre – Musandam, Oman

Client:

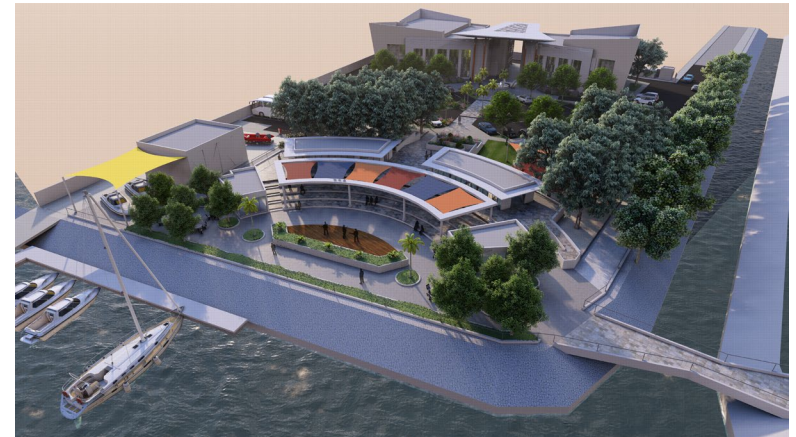
Razeen Architects & Engineers

Our Role:

Concept Design, Detailed Design & Tender Documentation – developing a complete landscape design package tailored to cultural and entertainment functions.

Project Importance:

The Musandam Cultural Centre was envisioned as a landmark destination reflecting the unique heritage of the region. Through its landscape design, GLD created outdoor spaces that seamlessly integrate **cultural expression with entertainment and community use**, providing a multifunctional environment that strengthens Musandam's identity and supports its growing tourism and cultural economy.



Featured Projects in the Sultanate of Oman Contributed to:

Say District, Izdihar District, Hay Al Sharq District & Industrial Districts – Duqm, Oman

Client:

Duqm Municipality / SEZAD

Our Role:

Concept Design, Detailed Design, Public Realm, Stormwater Management, Tender Documentation & Cost Estimation – providing a comprehensive landscape and infrastructure design package.

Project Importance:

As Duqm evolves into Oman's new economic hub, this project was designed to set a **sustainable standard for next-generation urban development**. GLD's work focused on creating resilient and people-centered public realm designs that integrate seamlessly with the city's masterplan. A major achievement was the innovative **wadi diversion strategy**, which not only enhanced stormwater management but also unlocked an additional **105 hectares of urban land** for development, significantly increasing the city's growth potential and investment opportunities.



Some international Projects by Our Designers

Parks

Featured Projects:

- LEGO LAND Park- Dubai- UAE
- Quaa Public Park- Al Ain- UAE
- Lin Gang Marine Science Park China
- Salamat Neighborhood parks- Al Ain- UAE
- Cuernavaca Railroad Linear Park, Mexico City
- Pachacamac Park, Lima, Peru
- Park Hyatt development , Mexico City
- Parks in Al Barsha- Dubai- UAE
- Tuzandepetl Archaeological Park, Veracruz- China
- Urbivillas sports park, Tijuana- China
- Zishan Lake Ecological Park in Yiyang City-China
- Shanghai Greenland Xujing Exhibition center- China



International Hotels & Resorts

Hotels & Resorts

Disneyland, Disney Hotel and Hollywood Hotel

Hong Kong , China

Shanghai Galaxy Hotel

Shanghai, China

Xishan Mingyue Bay Resort, Suzhou City

Suzhou, China

Qilian Zhong Tian Tai International Hotel

Tian, China



Urban & Residential Projects

Creating Sustainable Urban Environments

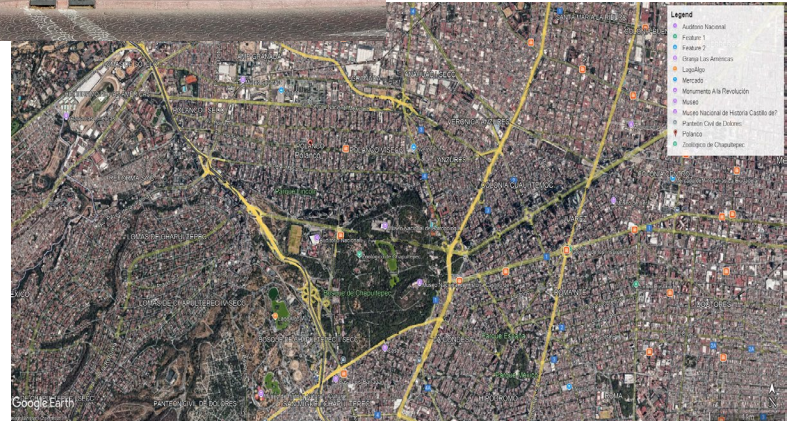
- Yiti Sustainable City - Sultanate of Oman
- Improvement of Lakbi ,Ras Souqrah, Ras Madrasah Waterfront
- Al Wusta, Oman
- Ras Al Hamra Development - PDO – Oman
- Improvement of Shannah Waterfront- Al Wusta, Oman
- Say District, Izdihar District, Hay Al Sharq District and Industrial Districts- Duqm, Oman
- Dubai Streetscape Projects – Dubai ,UAE
 - Streetscape for Al Barsha District- Jouzi
 - Streetscape for Al Qouz Industrial District- Jouzi
 - Streetscape for Al Warqa District- Jouzi
 - Streetscape for Mirdif District- Jouzi



Urban & Residential Projects

Creating Sustainable Urban Environments

- Improvement of Al Ain central Area – [UAE](#)
- HaiXing Square City Complex Yancheng city, [China](#)
- Intervention Urban Corridor Av Michoacan, [Mexico City](#)
- Competition for Social Interest housing, [Cambodia](#)
- Aristoteleus, Redesign of the Civic, [Greece](#)
- Housing Units Public and Private spaces for a city, [Japan](#)
- Three Squares –berlin – [Germany](#)
- Recovery of urban spaces, Polanco, [Mexico City](#)
- Residencial Tereo, Military Engineers, [Mexico City](#)
- Area San Lorenzo to Rome- [Italy](#)
- Commercial District, Weidong Urban Plaza, Qingdao, [China](#)



Environmental & Hydrologic Studies



Autonomous Remote Sensing and Surveying (ARAS) LLC, California

Hydrology, Environmental Design & Ecology Restoration

Global Landscape Designers (GLD) delivers certified expertise in **hydrology studies, environmental design, and ecology restoration**, recognized by the **American Society of Landscape Architects (ASLA)**. We create sustainable solutions that restore ecosystems, improve water systems, and support biodiversity.

Through our U.S.-based sister company **ARAS**, we enhance our services with **real-time NASA satellite data**, providing precise, science-driven insights for water and environmental projects. Together, GLD and ARAS combine professional excellence with advanced technology to design landscapes that are resilient, sustainable, and future-focused.

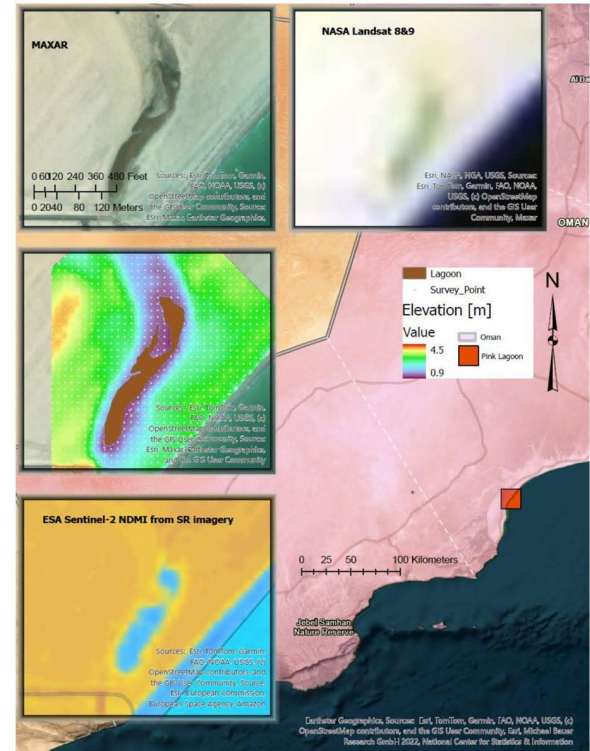


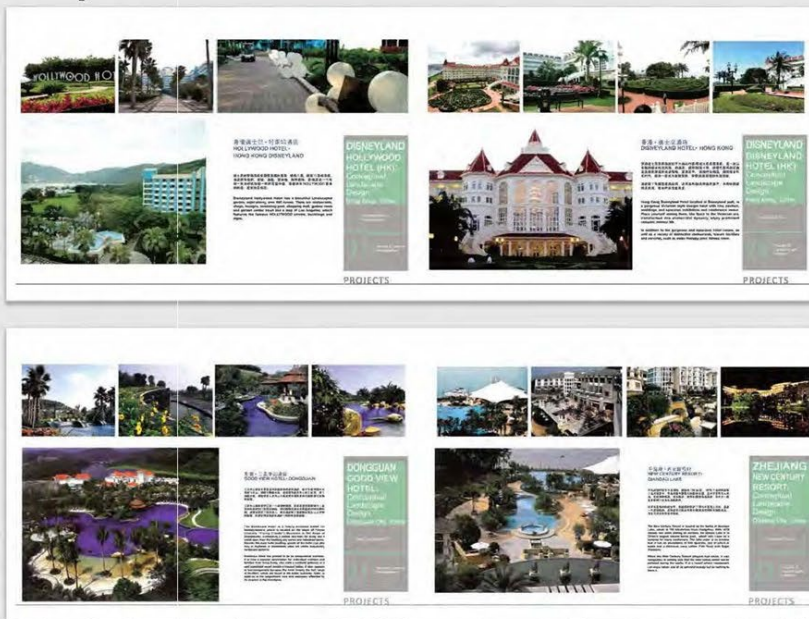
Figure 8- Pink Lagoon Extent validated with NASA Landsat and ESA Sentinel-2

More Projects ... “These are some of our other landmark projects from around the world, showcasing our global reach and expertise.”

Some of Projects Contributed in...

Hotels/ Resorts

- Jebel Hamra Hotel - Nizwa- Oman
- Barr Al Jissah Resorts & Spa- Muscat-Oman
- Crown Plaza Hotel - OCEC- Omran- Muscat- Oman
- Disneyland Disney Hotel and Hollywood Hotel - Hong Kong
- Dunhuang Hotel in Dunhuang City, Gansu Province
- Garden- Inn Hilton Hotel - ASAAS- Muscat- Oman
- Guizhou Huangguoshu Hot Spring Resort
- Hangzhou Hyatt regency Hotel
- Hani Teribal Peninsula Hotel resort
- Hefei Wanda Hotel Group
- Kampinski Hotel- Muscat- Oman
- Lianhua Island International Tourism Resort
- Marriote Hotel - OCEC- Omran- Muscat- Oman
- Movenpick Hotel- Amjaad-Muscat- Oman
- Nizwa Marriote Hotel- Nizwa- Oman
- Primus Hotel, Hongqiao, Shanghai
- Qilian Zhong Tian Tai International Hotel
- Sandus Rotana Hotel- Muscat- Oman
- Sea view hotel, Carlsberg, sanya
- Shanghai Galaxy Hotel
- Xishan Mingyue Bay Resort, Suzhou City
- Busher Traditional Hotel- Muscat - Sultanate Of Oman



More Projects ... “These are some of our other landmark projects from around the world, showcasing our global reach and expertise.”

Some of Projects Contributed in...

Commercial Landscape

- Oman Botanical Garden - Muscat- Oman
- Al Nahdi Mall- Muscat- Sultanate of Oman
- Musandam Cultural Centre- Sultanate of Oman
- Forty Two Schools Project in Sultanate of Oman
- Al Nahda Alomaniah Headquarter- Muscat- Oman
- Hay Al Sharq Residential project Barka - ASAAS-Oman
- Arabian Ranches Delma zone- Dubai-UAE
- Baoshan Temple in Baoshan District
- Butterfly Valley Shopping Center in Kaili City
- DIVERSA shopping center, Puebla.
- Environmental Landscape Design of Kuwait Olympic Center
- Health Club of Shanghai Songjiang University of Science and Technology
- Industrial CSG Headquarters, Shanghai
- La Cuadra 85 shopping center, Coacalco, Edo Mex.
- Landscape Design of Huihot Cultural Living Hub Project
- Landscape Design of Shanghai Pujiang Zhenligong Center
- Landscape Design of Shanghai Wanda Commercial Complex
- Lehua Trafford Business Center
- Lehua Trafford Commercial Center
- Meydan complex- Dubai- UAE
- My City Centre- Sur- Oman
- Microsoft China Headquarters - Beijing
- Museum of Polish History in Warsaw, Poland Competition.
- Tarwee Staff Accommodation Project at Dugm
- Third Extension Project of Lanzhou Zhongchuan International Airport
- Staff Accommodation- Amjaad- Ras Alhad- Oman



More Projects ... “These are some of our other landmark projects from around the world, showcasing our global reach and expertise.”

Parks/ Exhibitions

- 14th International Architecture Exhibition, Venice, Italy.
- 2010 World Expo- Vancouver Pavilion
- Oman Botanical Garden - Sultanate of Oman
- Sur Public Park - Sultanate of Oman
- Nizwa Public Park - Sultanate of Oman
- Italat Yanqul Park- Sultanate Of Oman
- Italat Dhank Park- Sultanate of Oman
- Ibri Public Park - Sultanate of Oman
- Al Wagan Public Park- UAE
- Alameda Norte Park, Azcapotzalco, Mexico City
- Bolleywood Park- Dubai- UAE
- Community Park in Keretiga
- Cuernavaca Railroad Linear Park, Mexico City
- Disneyland Fantasy world - Shanghai
- Gardens of the San Sebastián Park, Mexico City
- Goree Memorial, Dakar, Senegal
- Kunshan Software Park
- Landscape design for Garden of the Republic - Lebanon
- Landscape Design of Jinyu Garden in Weifang City
- Landscape Park project in Klaipeda district-Lituania
- Lin Gang Marine Science Park China
- Loggoland Park- Dubai- UAE
- Pachacamac Park,Lima, Peru
- Park Hyatt development , Mexico City.
- Parks in Al Barsha - Dubai- UAE
- Quaa Public Park- Al Ain- UAE
- Research of Historic Gardens and Parks (Japan, Kyoto)
- Salamat Neighborhood parks - Al Ain- UAE
- Shanghai Greenland Xujing Exhibition centre
- Techno-park shopping area children's park
- Tuzandepel Archaeological Park, Veracruz.
- Urbivillas sports park, Tijuana
- Wenjiang Park
- Xinmi Park
- Zayed AL Awwal Linear Park- UAE
- Zishan Lake Ecological Park in Yiyang City

Some of Projects Contributed in...



More Projects ... “These are some of our other landmark projects from around the world, showcasing our global reach and expertise.”

Urban/Residential

- Area San Lorenzo to Rome-Italy.
- Aristoteletus, Redesign of the Civic, Greece
- Ras Al Hamra Development- PDO- Sultanate Of Oman
- Say District, Izdihar District, hay Al Sharq District and Industrial Districts- Duqm
- Improvement of Shannah Waterfront- Al Wusta- Oman
- Improvement of Lakbi, Ras Souqrah, Ras Madrakah Waterfront - Al Wusta Oman
- Commercial District, Weidong Urban Plaza, Qingdao
- Competition for Social Interest housing, Cambodia.
- Cultural Center, Cuban Circle of Mexico, Mexico City.
- Escandón Market Master Plan, Mexico City
- Future City Design commercial and residential project
- Genesis Star Valley High-tech future city Hengyang
- HaiXing Square City Complex Yancheng city
- Housing Complex, Zacatecas.
- Housing Units Public and Private spaces for a city, Japan
- Improvement of Al Ain central Area - UAE
- Intervention Urban Corridor Av Michoacan, Mexico City.
- Landscape Design Residential Area in Shanghai
- Liahe River Bank in Liacynan City
- Mass bike parking, squad 201, Izatapalapa, Mexico City
- Master Plan for the CEDA urban corridor, Mexico City
- Master Plan for the comprehensive rescue of La Merced
- Mexipuerto urban, Industrial Park, Mexico City.
- North Market Cultural Park Business District
- Qingdao Harbor Project
- Recovery of urban spaces, Polanco, Mexico City.
- Residential Torre, Military Engineers, Mexico City.
- Streetscape for Al Barsha District- Jouzi-Dubai- UAE
- Streetscape for Al Qouz Industrial District- Jouzi-Dubai- UAE
- Streetscape for Al Warqa District- Jouzi-Dubai- UAE
- Streetscape for Mirdif District- Jouzi-Dubai- UAE
- Three Squares -berlin - germany
- Urban integration master Plan Santa Fe District,
- Urban Landscape Axis and Commercial Landscape Fujian Province
- Yunnan,Zhaotong,New district of Cultural and Sports

Some of Projects Contributed in...

